

This page contains all measurements used to develop the active rating, as well as the output from the regression analysis, including the **Residuals, Residuals Plot, and Line Fit**. Any additional information used in rating development will be stored in pages labelled with "Dev_". Rating development pages are only archived in the rating spreadsheet of the water year the rating was developed and must be removed from the following water year's copy.

SUMMARY OUTPUT

<i>Regression Statistics</i>	
Multiple R	0.998032
R Square	0.996068
Adjusted R Square	0.996043
Standard Error	0.080541
Observations	158

ANOVA

	<i>df</i>	<i>SS</i>	<i>MS</i>	<i>F</i>	<i>Significance F</i>
Regression	1	256.3619	256.3619	39520.04	1.5E-189
Residual	156	1.011954	0.006487		
Total	157	257.3738			

	<i>Coefficients</i>	<i>Standard Error</i>	<i>t Stat</i>	<i>P-value</i>	<i>Lower 95%</i>	<i>Upper 95%</i>	<i>Lower 95.0%</i>	<i>Upper 95.0%</i>
Intercept	-0.04809	0.006409	-7.50406	4.42E-12	-0.06075	-0.03543	-0.06075	-0.03543
Vel X	0.87771	0.004415	198.7965	1.5E-189	0.868989	0.886431	0.868989	0.886431

RESIDUAL OUTPUT

<i>Observation</i>	<i>Predicted (Q/A)</i>	<i>Residuals</i>
1	1.661685	0.067925
2	1.680994	0.005435
3	1.645886	0.016384
4	1.66344	0.039603
5	1.224585	-0.03159
6	1.259693	0.022443
7	1.321133	0.042669
8	1.32991	0.086326
9	1.645886	-0.13022
10	1.628332	-0.14285
11	1.610777	-0.11176
12	1.619555	-0.0621

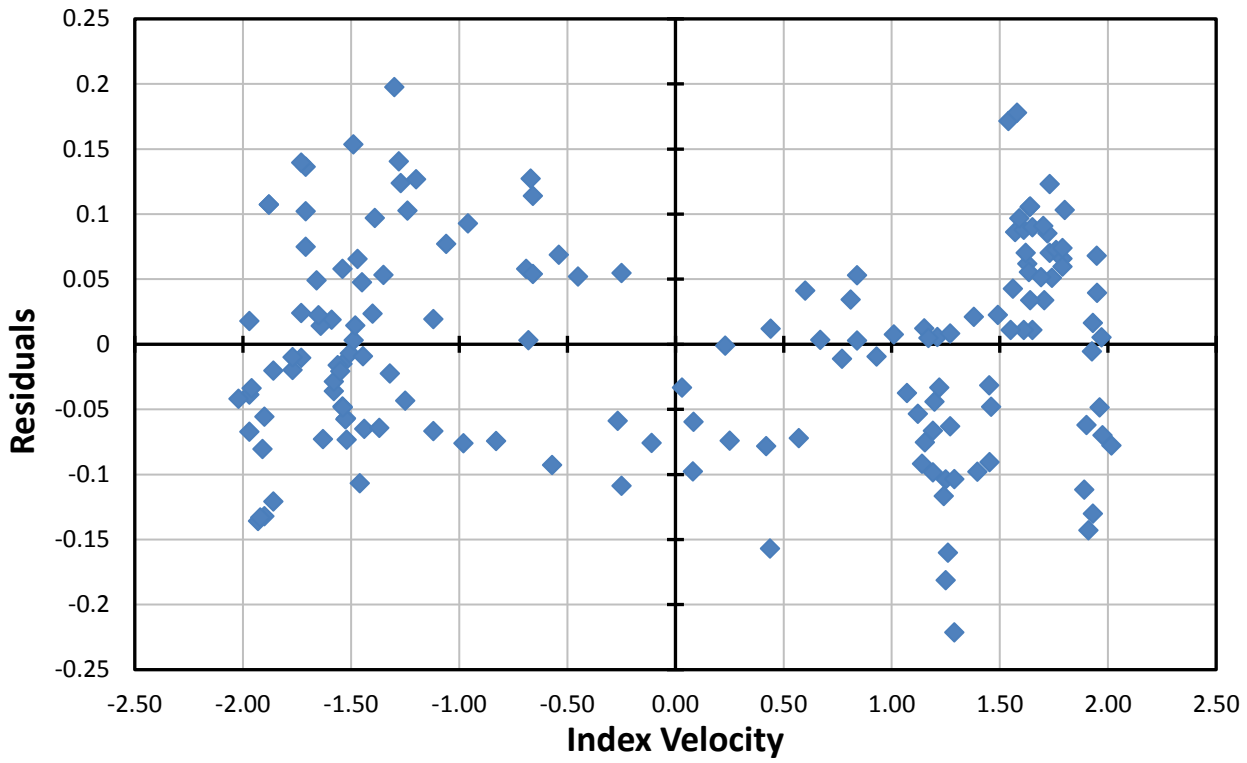
13	-1.39977	-0.04777
14	-1.43488	-0.03596
15	-1.38221	-0.07325
16	-1.39977	-0.01502
17	-1.54898	0.136349
18	-1.54898	0.07481
19	-1.54898	0.102207
20	-1.56653	0.139652
21	-1.18912	0.197502
22	-1.10135	0.12674
23	-1.13645	0.102811
24	-1.17156	0.140518
25	-0.64494	0.003177
26	-0.65371	0.058059
27	-0.62738	0.114124
28	-0.52206	0.068879
29	1.084152	-0.22134
30	1.049043	-0.18127
31	1.049043	-0.10388
32	1.040266	-0.11667
33	0.964432	-0.07523
34	1.084152	-0.10366
35	1.177189	-0.09784
36	1.226779	-0.09043
37	-1.38547	-0.05687
38	-1.38735	-0.05751
39	-1.41922	-0.01598
40	-1.39812	-0.04847
41	-1.37022	-0.00686
42	-1.35457	0.003147
43	-1.31059	-0.06502
44	-1.31595	-0.00909
45	0.334938	-0.15702
46	0.024536	-0.05966
47	-0.28215	-0.05873
48	-0.63616	0.127287
49	0.952319	-0.09174
50	0.996757	-0.09832
51	1.002634	-0.04401
52	1.014959	0.005531
53	1.721193	-0.07782
54	1.684944	-0.0698
55	1.673314	-0.04847
56	1.64179	-0.0055
57	1.37994	0.061998
58	1.386259	0.055543
59	1.389375	0.105334

60	1.448694	0.033888
61	1.39135	0.033848
62	1.365019	0.087896
63	1.373796	0.070344
64	1.347464	0.096823
65	1.303579	0.171558
66	1.338687	0.177871
67	1.39135	0.105791
68	1.400127	0.090007
69	1.470344	0.122995
70	1.461567	0.085298
71	1.470344	0.070183
72	1.496675	0.072556
73	1.531784	0.103127
74	1.523006	0.065712
75	1.523006	0.059697
76	1.523006	0.074021
77	1.479121	0.051195
78	1.444013	0.090826
79	1.435235	0.051595
80	1.400127	0.01109
81	1.365019	0.011076
82	1.312356	0.01094
83	1.233362	-0.04809
84	1.163145	0.020971
85	1.066597	0.00826
86	0.961272	0.012298
87	0.838393	0.007552
88	0.689182	0.002879
89	0.478532	0.041192
90	0.338098	0.012063
91	0.153779	-0.00104
92	-0.02176	-0.03328
93	-0.26752	0.054854
94	-0.44306	0.051967
95	-0.62738	0.054024
96	-0.8907	0.092982
97	-0.97847	0.077128
98	-1.03113	0.01937
99	-1.16279	0.123952
100	-1.233	0.05319
101	-1.26811	0.097019
102	-1.35588	0.153544
103	-1.27689	0.023643
104	-1.33833	0.065666
105	-1.3471	0.014391
106	-1.39977	0.058021

107	-1.44365	0.018901
108	-1.48754	0.014177
109	-1.50509	0.049162
110	-1.49632	0.022354
111	-1.56653	-0.01041
112	-1.56653	0.024128
113	-1.69819	0.107483
114	-1.68063	-0.0202
115	-1.69819	0.107362
116	-1.77718	0.017771
117	-1.71574	-0.05569
118	-1.77718	-0.03859
119	-1.77718	-0.06728
120	-1.82107	-0.04182
121	-1.71574	-0.13206
122	-1.76841	-0.03381
123	-1.74207	-0.13573
124	-1.7333	-0.133
125	-1.72452	-0.08049
126	-1.68063	-0.12072
127	-1.60164	-0.01983
128	-1.60164	-0.00994
129	-1.47876	-0.07284
130	-1.43488	-0.02851
131	-1.40854	-0.0206
132	-1.32955	-0.1068
133	-1.32077	0.047646
134	-1.25056	-0.0643
135	-1.20667	-0.02234
136	-1.14523	-0.04333
137	-1.03113	-0.06664
138	-0.90825	-0.07591
139	-0.77659	-0.07437
140	-0.54839	-0.09268
141	-0.26752	-0.10862
142	-0.14464	-0.07572
143	0.022123	-0.09772
144	0.171333	-0.07396
145	0.320544	-0.07817
146	0.4522	-0.07198
147	0.539971	0.003373
148	0.627742	-0.01108
149	0.662851	0.03429
150	0.689182	0.053002
151	0.768176	-0.00939
152	0.891055	-0.0375
153	0.934941	-0.05349

154	1.05782	-0.16009
155	0.996381	-0.06642
156	0.978826	0.004891
157	1.022712	-0.03316
158	1.066597	-0.06295

Residual Plot



Index Velocity Line Fit Plot

